



## Greenhouse Gas Verification Statement

The inventory of Greenhouse Gas emissions in 1<sup>st</sup> January 2018 to 31<sup>st</sup> December 2018 of

## CR CONSTRUCTION COMPANY LIMITED

Unit No. 3-16, Level 32, Standard Chartered Tower of Millennium City 1, 388 Kwun Tong Road, Kwun Tong, Kowloon, Hong Kong

*has been verified in accordance with ISO 14064-3:2006 as meeting the requirements of*

**ISO 14064-1:2006**

*For the following activities*

Construction of buildings  
Construction of road works and drainage works  
Construction of site formation works

Signed for and on behalf of

**ACCREDITED CERTIFICATION INTERNATIONAL LIMITED**

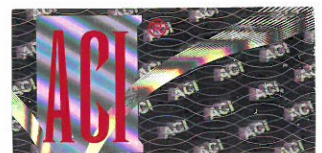
A handwritten signature in black ink, appearing to read "Ng Yau", written over a horizontal line.

Secretary

A handwritten signature in black ink, appearing to read "Tsai Yung", written over a horizontal line.

Board Member

Registered address: Unit 1901, Yen Sheng Centre, 64 Hoi Yuen Road, Kwun Tong, Kowloon, Hong Kong  
Tel (852) 39778988 Fax (852) 28061940  
Email:enquiry@aci-limited.com Website: www.aci-limited.com



Note: This statement is not valid without the full Greenhouse Gas Assertion and the verification scope, objectives, criteria and findings available on pages 2 to 4 of this Statement.